



The Whistler

A North East Wales Referees' Association Publication

Season 2009/10

February 2010

Issue No 6

My First Year as Chairman (By Chris Noble)



As this is my second season as your Chairman please let me introduce myself.

I started out refereeing in the mid eighties under the guidance of Sir Cliff Evans and Lord Ken Hughes, and in those days you could progress through the 3 Classes (old system) fairly quickly which happened to me. After three seasons I was invited to join The North West Counties Football League, which entailed being forth official in football league matches highlight being forth official at Liverpool Vs Chelsea in 1992 with ex F.A Cup Final Referee Kieran Barrett in the middle. I refereed a couple of Cymru Alliance matches and I also made it onto the L O W linesman's list for a couple of seasons but my career has mainly been in the Welsh National league.

It has always been my intention to enter football administration for many years and as Chairman of your association this is the first step of many I hope, and as my Refereeing career comes to an end and I will be looking for more roles within Football Administration.

My first season as your Chairman certainly wasn't what I had expected. At the first executive meeting I asked how many members we had the and the answer came back as "fifteen". I was absolutely devastated. We found that there had been a few major problems within the administration. It was understood that the registration letters had gone out when in fact they hadn't. Members thinking that the payment made to NEWFA also included the NEWRA fee. I spent the next couple of months on a personal crusade to get the membership numbers up I even spent a very foggy weekend hand delivering membership forms thought-out North East Wales. This season we got it right with membership now at a record eighty, for that I thank you all for your efforts making this possible.

One of the most difficult aspects of the executive committee is the monthly topics. Believe me, it is very difficult to bring in various topics each month so any suggestions from you all would be very much appreciated. If you have an ideas please contact any committee member. I also sit on the RAW board representing NEWRA and this comes with its difficulties also, but thankfully they do not affect us.

Finally, our charity events/sportsman's evening (which get very little support from Referees), have been a great success and I thank the committee for all the hard work they put into it. From my point of view it takes a lot of time from late November to cheque handover in June but it is well worth it. Details are on the website so please take a look.

I would like to take this opportunity to personally thank Cliff, John & Chris for their support and help it's very much appreciated.

Chris Noble
Chairman NEWRA

Inside this issue:

<i>Frozen Pitches</i>	2
<i>Assistance Required</i>	2
<i>Fitness Test Time</i>	2
<i>Promotion for FIFA Refs</i>	3
<i>Rave Reviews for Refs Pub</i>	3
<i>Update on Meeting</i>	3
<i>Development Group Update</i>	4
<i>Social Evenings</i>	4

Dates for your Diary

Monthly Meetings

2009/10

Held at

Wrexham Lager Club

at 7.45pm

February 1st 2010

March 1st 2010

April 12th 2010

AGM 7th June 2010



Frozen Pitches



The above scene is being seen more and more around our area at the moment

Weather to get worse

With weather reporters suggesting that Britain is bracing itself for one of the coldest winters for a century and that temperatures could hit minus 16 degrees Celsius it is a good time to remind referees of their responsibilities regarding pitch inspections.

Preparation Key

Referees should visit the ground in good time before a match to see that everything is in order. If through bad weather or negligence the state of the ground is such that it may endanger the players, you should refuse to sanction play.

Likely issues

Things to look out for include lack of visibility, snow on the pitch, frozen patches, hard rutted areas and then also boggy areas once the ice begins to melt.

Questions to ask

Referees must ask themselves:

1) Will the game be a farce if it is played?

And

2) Are players going to be safe playing on this surface?

Responsibility

If the answer to either of these is no the game should be called off.

But clubs want to play

Remember that no matter how supportive clubs are to try and get games played referees are the sole judge as to whether a pitch is playable. Clubs opinions will therefore change quickly if their star player is injured as a result of the pitch. You therefore need to be comfortable in your own decision that the game can go ahead.



Brian Roberts is looking for volunteers to help with his Charity Fun Day on 19th June 2010

Assistance Required

Upcoming Event

Brian Roberts has been in touch to let me know about the Wrexham Hospital League of Friends Charity Fun Day which is to be held in the Queens Square, Wrexham on Saturday 19th June, 2010 from 10.00am to 4.00pm.

Main Event

The main challenge of the day will see Primary School Children trying to complete the Marathon Race as a tag relay. Each School will run for a pe-

riod of 30 minutes with 120 children taking part.

Assistance Required

To ensure that the children remain supervised at all times runners are required to run a circuit of 800 metres around Wrexham Town Centre with 5 children (10yrs old) for a period of 30 minutes - 60 minutes.

Referees Support

Any help from Referees would

be more than appreciated by Brian to try and assist this event which is supporting our chosen charity of 2009.

Contact Details

Anyone interested in assisting with this event can contact

Brian Roberts

on 01978 362477

or by e-mail at

brianroberts1948@hotmail.com

Fitness Test Time

What tests?

Throughout February NEWFA will be holding their annual fitness tests at Queensway in Wrexham. All registered referees are urged to take the test although it is not compulsory unless you are looking for promotion to level 5.

When?

The tests will take place on the following dates:

Sunday 7th February 2010 (3pm)

Wednesday 10th Feb 2010 (7pm)

Sunday 14th February 2010 (3pm)

Wednesday 17th Feb 2010 (7pm)

Support Needed

Please try to support these tests as there is a lot of work that goes in to organising these

events. The more we have at these types of tests the better as referees can then drag each other round the test. Good luck to everyone who does take the test!



Will you be able to beat the clock?



Promotions for FIFA Referees

Promoted Refs

Two FAW Referees' Lee Evans and Huw Jones have received confirmation of their UEFA Referees Categories for the second half of the season 2009-2010. Both referees have been promoted up a Category in the UEFA rankings with Evans going up from Category 3 to Category 2, becoming Wales' highest ranked FIFA Official and Jones going up from Category 4 to Category 3. The achievement of Jones from Llanrhaeadr Ym Mochnant is fantastic as he is just completing his first year as a FIFA Referee, having benefited when Wales received an extra Refereeing place in January 2009.

ary 2009.

Classification of Other Refs
Wales' two other FIFA referees Ceri Richards (Llanelli) and Mark Whitby (Swansea) remain as Category 3 Referees, although both continue to receive excellent marks and feedback when on International duty.

Change for 2011

The 2010 calendar year will be the last year for the long-serving Richards on the FIFA list as he will have to step down from the FIFA panel at the age of 45. His service for the FAW on the International list since he was promoted to it in 1994 has been superb and it is excellent

that he will be representing Wales for one more year on the International stage. When he does step down from the FIFA list, it will open the door for another Welsh Referee, who will have the opportunity for nomination to the FIFA panel in 2011.

Opportunities

This clearly shows that Welsh football is moving forward and that referees are being recognised for their performances at the top level. The opportunities to be involved in football at a higher level are therefore increasing within Wales.



Both Lee Evans (above) and Huw Jones (below) have been promoted within FIFA for 2010



Rave Reviews for Referees Pub

Owner

As many of you may already be aware one of our executive committee members Matthew Keegan now owns the Red Lion in Penyffordd. Matthew has been refereeing within the area for a number of years and has always been a strong supporter of our Association.

Positive Feedback

A number of referees have been in touch with me to tell me about how impressed they have been with both the pub

and restaurant at the venue.

E-mail received

One e-mail stated that "I went out last night for a meal at Mathew Keegan's pub (Red Lion Penyffordd) had a very good meal there, Would you be able to put something in the whistler about it as it good to try and support our fellow referees"

Support

Matthew has in the past kindly supported a number of our RA events and has also agreed to

host a Race Night later this year at his pub. Your support would therefore be appreciated as would any further feedback from any subsequent visits.

Members Input

Again I would like to urge all members to pass on any feedback or comments directly (or closely) relating to refereeing for inclusion in subsequent "Whistler" publications.



Matthew Keegan's Red Lion pub has been receiving rave reviews from many of our members

Update on Meeting

Content

During the January meeting the topic for discussion was Offside. This was aided by a Prozone dvd that had been sent to us by the Referees Association. The incidents that were looked at aimed to clarify officials understanding of interfering with play, interfering with an opponent or seeking to gain an advantage.

General response

The evening seemed to provide some healthy debate with it being well received by those present. The format of the evening was again looked at as being a success with it being agreed to look at this type of evening again.

Using what was learnt

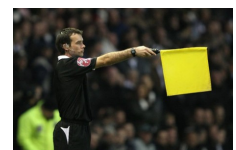
It is hoped that the dvd will have provided officials with a clearer insight in to how to interpret offside decisions.

Advice

Officials were again reminded of the "Wait and See technique" and urged to use all the time available to them in order to ensure that they are clear in the decisions that they are giving.

February Meeting

Bala Town will be sending representatives to our February meeting so your support would again be appreciated.



The role of the assistant referee and the interpretation of the offside law took centre stage at the January meeting



Season 2009/10

Development Group Update

Gerald's New Role

As mentioned in the January issue of the "Whistler" Gerald Davies has now taken up the role of Referee's Development Officer for North East Wales. The aim of the group is to help young officials with "perceived potential" to develop in to the next Welsh Premier and FIFA referees.

Group Now in Place

The officials in the initial 'Development Group' have now been confirmed as:-

Karl Pugh, Tom Roberts, Ashley Jones, Ellis Hughes, Tom Ellis, Tom Williams, Josh Wiffen and Ryan Roscoe.

Plans for Group

Over January those within the group will be expected to attend the mid season seminar as well as the referee training organised by NEWFA for 24th and 31st January.

Fitness training is still also ongoing on Wednesday nights at Queensway as well as the NEWFA fitness tests being held in February.

It is hoped that the group will attend a midweek Welsh Premier League match, possibly Feb or Mar. It is hoped that it will give them all an insight of the standards that are required at the top tier in Welsh Football.

A meeting is also planned for the 11th March, where hopefully an educational DVD will be shown and the group will also discuss assessments and any problems that may have arisen during any of their matches.

All the Best!

I am sure that you all join me in wishing Gerald and the "Development Group" all the best for the remainder of the season. Those not included keep working hard to get a place!

Officers and Contact Details

Cliff Evans—President

Phone: 01978 361406

E-mail: cliff727@btinternet.com

Chris Noble—Chairman

Phone: 01352 755508

E-mail: c9cjn@btinternet.com

Neale Atkinson—Vice Chairman

Phone: 01244 547310

E-mail: nealeatki@hotmail.com

Chris Allen—Treasurer / Kit Supplies

Phone: 01978 362345

E-mail: eslessred@yahoo.co.uk

John Swindley—Secretary

Phone: 01978 750900

E-mail: johnswindley@live.co.uk

Social Evenings

February 19th

Bowling Night



Wrexham at 7.30pm

Price not yet known

Contact—John Swindley

01978 750900 or

johnswindley@live.co.uk

March 12th

Sportsman's Evening

Guest Speaker: Jan Molby



Tickets £25 each

Must be bought in advance

Contact—Keith Spencer

01978 841888 or

annkeith47@btinternet.com

May 29th

Race Day at Haydock

Men & Women Welcome



£25 (Bus, Food + Ticket)

£10 deposit required

Contact—Dave Fawkes

07841435334 or

dave030172@gmail.com